



SUBARU WRX STI 2.0L, 2.5L (VA) - 2014-2021

DIRECT-FIT OIL COOLER INSTALLATION GUIDE

THANK YOU FOR PURCHASING OUR
OIL COOLER KIT (Part No. HOCK-SUB-007)



TOOLS REQUIRED

5MM ALLEN KEY
10MM, 26MM SOCKET/SPANNER
PHILLIPS SCREWDRIVER
AN10 SPANNER
TRIM TOOL
DRILL & 6MM DRILL BIT



ATTENTION

- READ THIS MANUAL FULLY BEFORE INSTALLATION
- MAKE SURE THIS KIT WILL FIT YOUR VEHICLE
- HEL RECOMMENDS THAT A TRAINED PROFESSIONAL INSTALLS THIS KIT

PARTS LIST

6 SERIES - 16 ROW SETRAB
FOLDED BRACKET
2 X COOLER MOUNTS
COOLER MOUNTING HARDWARE
HEL MULTI-ANGLE THERMOSTATIC OIL FILTER SANDWICH PLATE (WITH ADAPTERS)
2 X COOLER LINES
2 X 21MM P-CLIP WITH HARDWARE

PLEASE CHECK ALL PARTS ARE PRESENT BEFORE STARTING THIS MODIFICATION





SUBARU WRX STI 2.0L, 2.5L (VA) - 2014-2021

DIRECT-FIT OIL COOLER INSTALLATION GUIDE

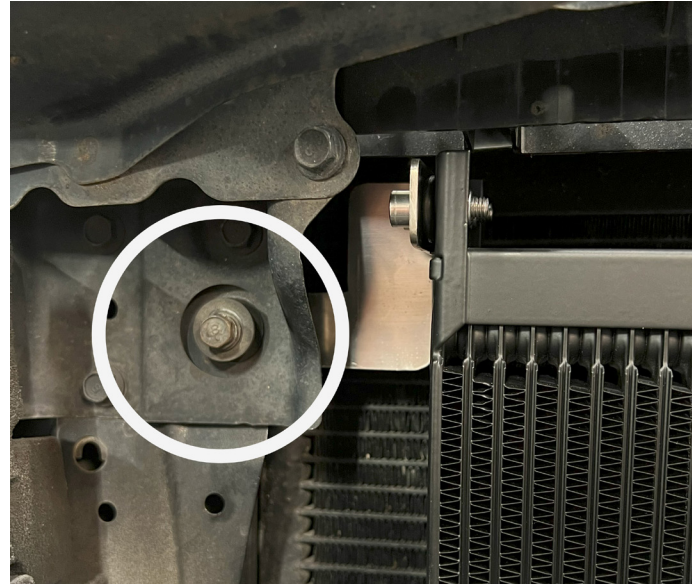
1. Jack up the car, secure on axle stands, disconnect the battery.
2. Remove the bumper & under tray as per OEM instruction.



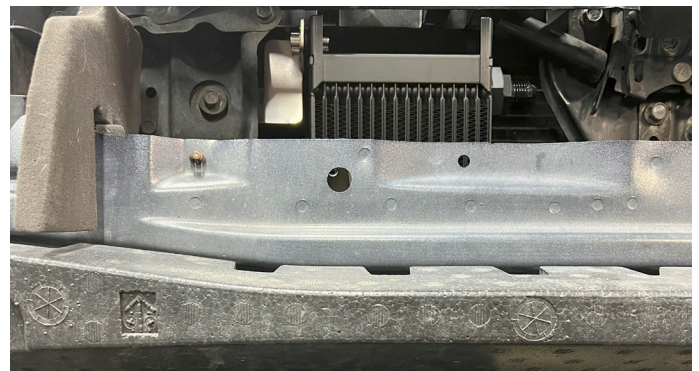
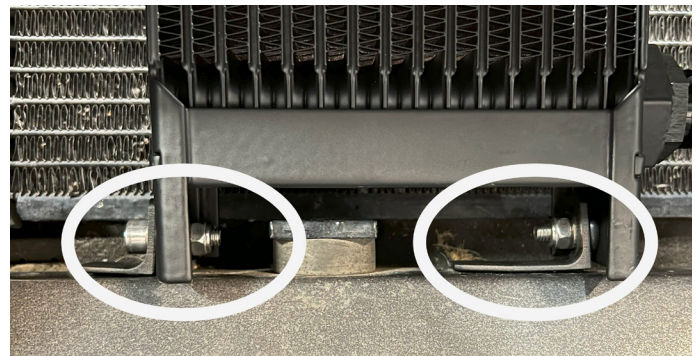
3. Install bracket and adapters to cooler in shown configuration.



4. Remove the highlighted bolt and install the cooler bracket between the AC condenser and rubber grommet. **Do not** fully tighten at this point.



5. Install locator dowels to the lower of the cooler mounts using factory holes. Tighten the top mounting bolt when positioned correctly.





SUBARU WRX STI 2.0L, 2.5L (VA) - 2014-2021

DIRECT-FIT OIL COOLER INSTALLATION GUIDE

6. Locate and remove the oil filter .



7. Lubricate the sandwich plate o-ring using new engine oil. Install the sandwich plate centre bolt finger tight then 3/4 turn.



8. Prefill and install a new oil filter.

9. Route the hoses above the exhaust and connect the 45° ends to the sandwich plate. Ensure that the fire sleeve is positioned as to protect the hose from exhaust heat.

10.

Route the hoses above the lower radiator hose and out between the washer bottle and crash bar as shown. Use the supplied hose separators to ensure there is no chaffing.

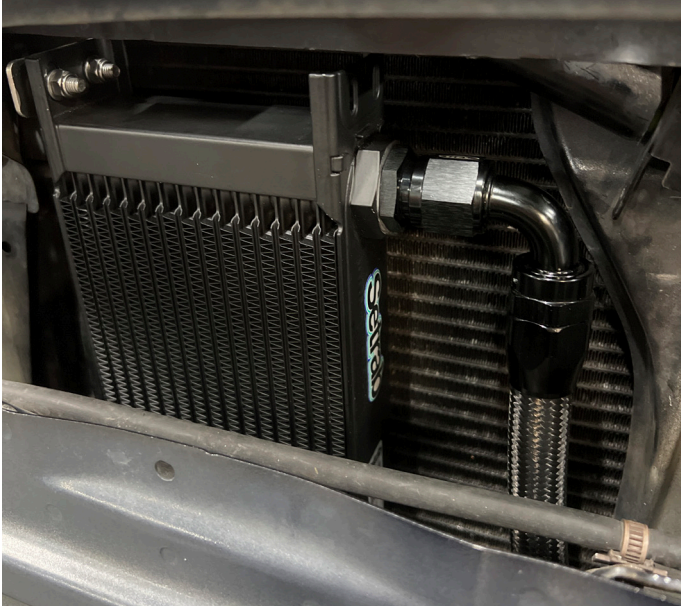




SUBARU WRX STI 2.0L, 2.5L (VA) - 2014-2021

DIRECT-FIT OIL COOLER INSTALLATION GUIDE

11. Install the 90° hose end to the upper oil cooler port, and the 30° to the lower.



13. Trim the foam air ducting to allow for clearance of the hoses.



12. Find a suitable location and drill a 6mm hole in the plastic bumper support, using the supplied P-clip secure the hoses.



14. Re-install front bumper and undertray in accordance to the manufacturer's instructions.

15. Re-connect the battery, start the car, check for leaks and top up the engine oil as required.

Now it's time to grab a drink... sit back... and admire your new catch can kit from HEL PERFORMANCE.

We always love to see what our customers have been up to, please tag us on our social media accounts and show off your automotive builds.

    @HELPERFORMANCE

